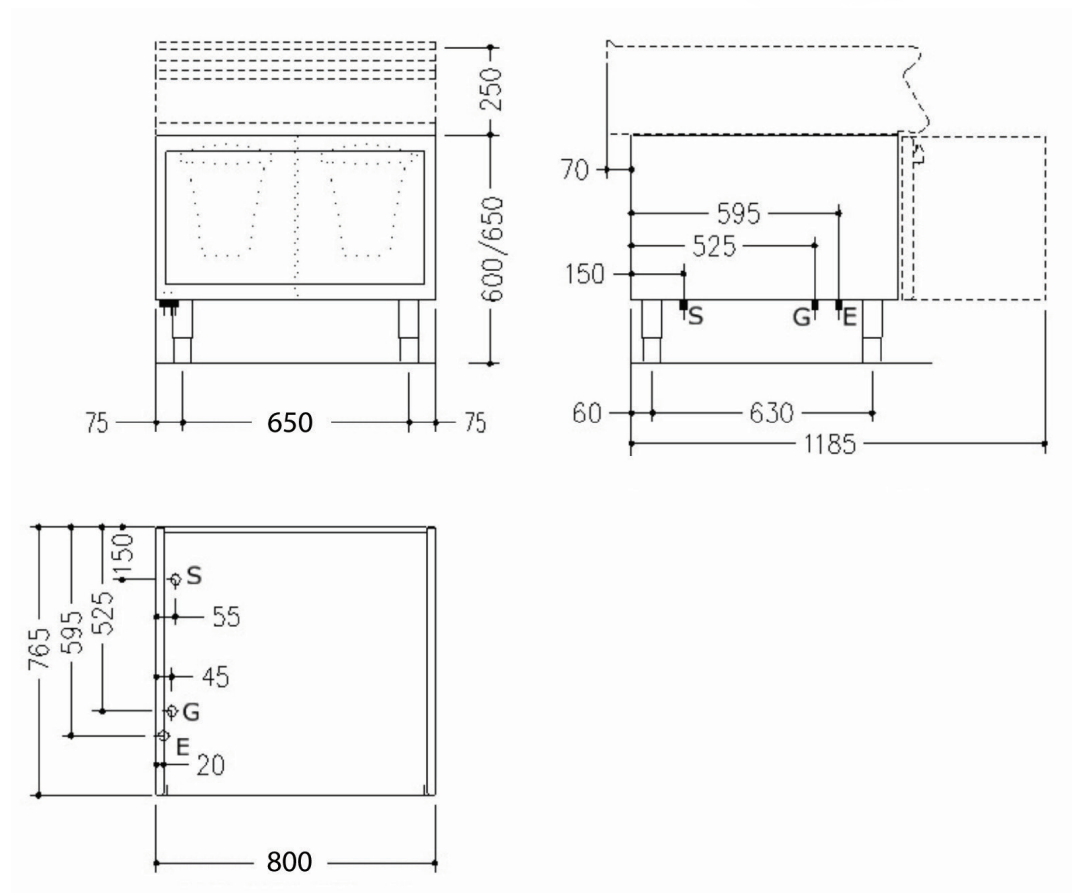


Base unit constructed in AISI 304 stainless steel. Height adjustable feet in stainless steel.

OPTIONAL FEATURES

- Cabinet door



DIMENSIONS

765D x 800W x 620H mm

Weight: 17kg

SHIPPING DATA

830D x 860W x 650H mm

Shipping Weight: 21kg

SPECIFICATIONS ARE SUBJECT TO CHANGE WITHOUT NOTICE.

LEGEND

E = Socket (if required)

S = Draining (if required)

G = Gas (if required)