

HI LINE PROFESSIONAL PASS THROUGH DISHWASHER AND UTENSIL WASHER

The HCXLR pass through dishwashers and utensil washers guarantee excellent performance, hygiene, reliability and low energy use.

The digital control panel with colour coded buttons displays the operating status along with wash and rinse temperatures. The RCD (Rinse Control Device) ensures that consistent water pressure is applied during the rinse phase.

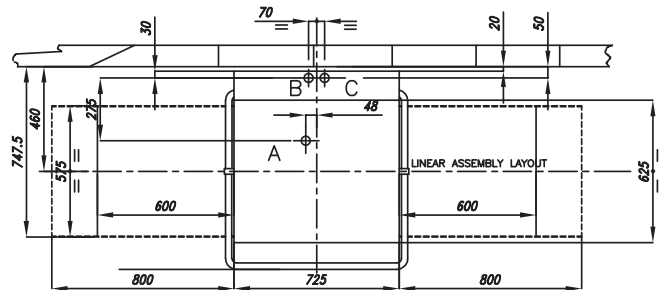
The vertically installed wash pump is self draining to prevent dirty water building up.

Features hood activated cycle start and manual cycle start, drain pump, atmospheric RCD booster and electronic adjustment of detergent and rinse aid dispensers.

It's massive 600 x 500 x 530 mm washing chamber and powerful pump, the HCXLR is truly a multi purpose washer designed to wash GN 2/1 trays, containers, pans as well as plates, crockery, cutlery and glasses. The HCXLR features a 30% higher capacity compared to the standard size pass through dishwasher

STANDARD FEATURES

- Full stainless steel frame, tank and panels AISI 304
- Colour coded status indicators - Green means Ready to start, Blue means cycle started, Red means alarm/check fault
- Soft start - cycle begins slowly to prevent glasses and crockery moving
- Upper and lower stainless steel wash and rinse arms
- Adjustable legs supplied standard
- 1 piece deep drawn wash tank with multiple filtering system (pump suction, collection filter and micro filter) with presence indicator
- Inlet and waste hoses included
- Large 530mm clearance
- Detergent dispenser & rinse aid dispenser
- Guaranteed rinse cycle only when water at 85°C
- ECO cycle with reduced consumption of water, detergent and electricity
- Electronic control panel with digital display on top of hood
- Includes removable rack holder
- Accessories include: 1 peg rack, 1 flatware rack, 1 cutlery container, 1 insert for bakery pans
- Self cleaning cycle at unit switch off
- Drain pump
- Double Skin insulated hood



- A | TANK DRAIN
- B | WATER INLET 50/60°C - 2/4BAR
- C | ELECTRICAL CONNECTION

DIMENSIONS

Dishwasher: 724W x 740D x 1637/2120H mm

Clearance: 530 mm

Rack size: 600mm x 500mm

WASH CYCLE

5 Cycles - FAST (47 sec) / Glasses (90 sec) / Dishes (120 sec) / Intensive (240 sec) / ECO2 (240 sec)

POWER SUPPLY

400V 3N 50Hz 20A three phase (not plugged)

TECHNICAL DATA

Energy Consumption: 11.2kW

Water Temp. Supply: 45°- 55°C

Water Connection: 2-4 bar, 3/4"

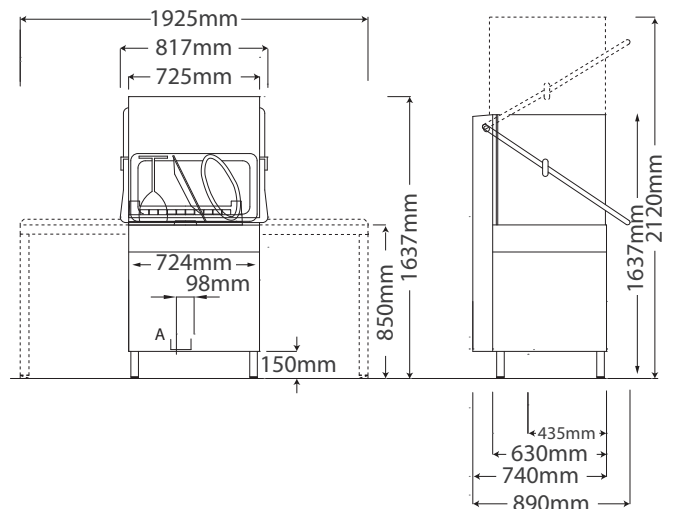
Tanks Drain: 50mm

Water Consumption: 2.8L per cycle / rack

Noise: 66 dBA

Weight: 149 kg

Control Panel: Digital



SPECIFICATIONS ARE SUBJECT TO CHANGE WITHOUT NOTICE.