

ChefLinc™ Oven Management System Alto-Shaam Ovens with Deluxe Control

cheflinc

Welcome to ChefLinc

Register to the new account by completing the following steps.

- User Data**
Enter your user details. As the first user of the account, you will by default be added as the account administrator.
- Email Confirmation**
Access confirmation link sent to entered Email ID to confirm your account.
- Company Data**
Add details of your Company for which the account has been created.
- Add Location**
Add a location (store) where the units (ovens) will be placed.
- ADD Units**
How to add purchased ovens to the account.
- Create Groups**
How to create groups for your unit (ovens) locations.
- ADD Users**
How to add other users to access the account.
- Account Settings**
How to check and edit your account settings.

[Privacy policy](#) | [Terms of service](#)

Powered by **ALTO SHAAM**

VMC-TS-008357

User Data

First name Last name

User image

Email ID Phone Number

Enter Password

Confirm Password

I have read and accept the Terms & Conditions, Privacy Policy and Cookie Policy

Yes, I would like to receive updates about products, services, promotions, special offers, new events from Alto-Shaam via email.

Save and Proceed

MN-46714-EN

REV.02
4/20

EN



Manufacturer's Information

Copyright	<p>© Copyright 04/20 by Alto-Shaam, Inc. All rights reserved. This manual or any portion thereof may not be reproduced or used in any manner whatsoever without the express written permission of Alto-Shaam, Inc.</p> <hr/>
Trademarks	<p>All trademarks referenced in this documentation are the property of their respective owners.</p> <hr/>
Manufacturer	<p>Alto-Shaam, Inc. P.O. Box 450 W164 N9221 Water Street Menomonee Falls, WI 53052</p> <hr/>
Original instructions	<p>The content in this manual is written in American English.</p>

What is ChefLinc™?

Alto-Shaam's ChefLinc is a cloud-based, remote oven management system that allows a user to interact with their Alto-Shaam oven. The system does the following:

- Connects ovens to the Alto-Shaam data cloud for storing oven operational data;
- Connects ovens to the Alto-Shaam cloud-based recipe libraries for centralized management of recipes across an organization;
- Provides a dashboard for administering and organizing an organization's ovens based on locations and groups;
- Provides a dashboard for creating, managing, and distributing recipe libraries to one or multiple ovens/locations/groups;
- Provides a dashboard for seeing real-time connectivity status, cooking state, and any alert conditions.

ChefLinc adds convenience and versatility to managing ovens, assigning recipes, and obtaining HACCP data, but it is not required to operate an Alto-Shaam oven. The oven may be operated and programmed directly through its touchscreen controller.

This page intentionally left blank.

Manufacturer’s Information 2

Foreword 3

 What is ChefLinc™? 3

Table of Contents 5

Operation 7

 Before You Begin 7

 How to View Oven Information 8

 How to Set up an Account 9

 How to Change Profile Settings 11

 How to Add a Location 13

 How to Add a Unit 14

 How to Add a User 15

 How to Create a Group 16

 How to Create a Recipe 18

 How to Assign a Recipe to a Unit 22

 How to Assign Multiple Recipes to Multiple Units 25

 How to Create and Assign Unit Settings 28

 How to View HACCP Data 32

 User Permissions 34

Troubleshooting 35

 Cheflinc.alto-shaam.com is not Available on your Device 35

 Cannot Connect to cheflinc.alto-shaam.com. 36

 The Oven is not Displayed on the Dashboard 37

 Unable to Assign Recipes from the Dashboard to Ovens in the Field . 38

TABLE OF CONTENTS

TABLE OF CONTENTS

This page intentionally left blank.

Before You Begin

There are several items you will need to know before you begin using ChefLinc™. These items include:

- The type of oven(s) you are working with. This is determined by the number of chambers it has. For example: VMC-H4H and VMC-H4 have four chambers; VMC-H3H and VMC-H3 have three chambers; and VMC-H2H and VMC-H2 have two chambers.
- The unit's serial number. The serial number can be found on the unit's serial number tag or on the oven information screen accessed manually through the oven's touchscreen controller. See topic *How to View Oven Information*.
- Like many applications, there are multiple ways to access and enter the information required by ChefLinc. This manual is geared toward the novice user and is written for that audience.
- Throughout this manual, the terms "unit" and "oven" are interchangeable.

How to View Oven Information

Background

This procedure is to be done through the touchscreen on the Deluxe control, not through the ChefLinc™ oven management system.

The oven information screen shows the system info, serial number, network status, connection settings, and cleaning timer.

Procedure

To view oven information, do the following.

Step	Action
1.	<p>Touch the menu icon ①. The menu screen displays.</p>  <p>VMC-TS-006259</p>
2.	<p>Touch the Info page icon ②. The oven information screen displays.</p> <p>Scroll to view the oven model, serial number, system software, network status, and cleaning timer.</p>  <p>VMC-TS-008242</p>

Result

The oven's information has been viewed.

How to Set up an Account

Before you begin

- The unit you are connecting to must be turned on.
- You'll need the email address that will be used as the main point of contact for your company.
- The unit you are connecting to must be connected to the Internet. The connection must be secure, and you'll need to know the password. Either WiFi or Ethernet may be used.

Procedure

To set up an account, do the following.

- | Step | Action |
|------|---|
| 1. | <p>Go to https://cheflinc.alto-shaam.com/signup/user. The welcome screen displays.</p> |

Enter the requested information, then click Save and Proceed.

Continued on next page

Continued from previous page

Follow the prompts.

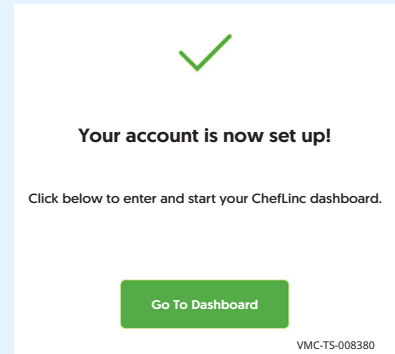
Enter the requested information on each screen.

- User Data
- Email Confirmation
- Company Data

At this point your account will be set up. Advanced users may go on to

- Add Location
- Add Units
- Create Groups
- Add Users
- Account Settings

For less experienced users, see the following pages for instructions.



Result

The account is now set up.

How to Change Profile Settings

Before you begin

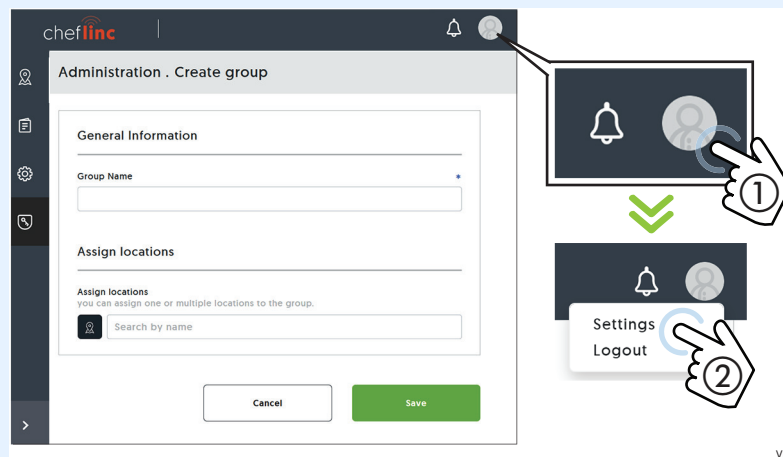
- Make sure you have a ChefLinc™ account set up.
- If you want to add a profile photo to your profile, you'll need a photo.

Procedure

To change profile settings, do the following.

Step	Action
------	--------

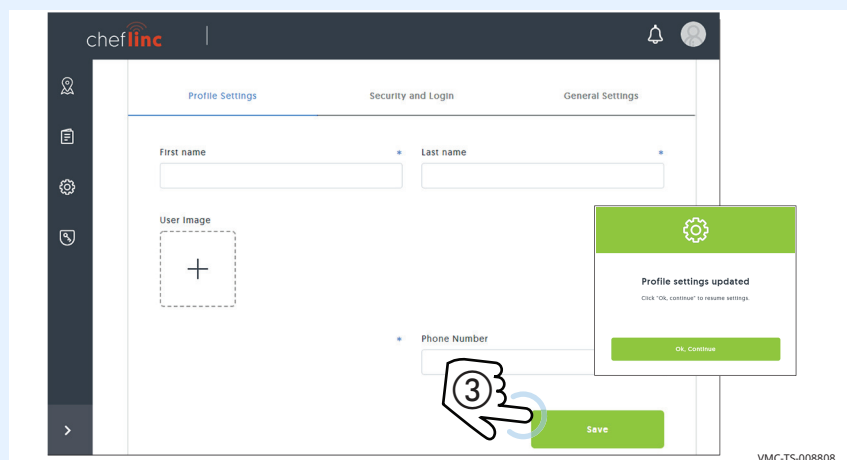
1. **Sign in** to your ChefLinc account.
Click profile settings icon ①.
Click "Settings" ②. The settings screen displays.



VMC-TS-008806

Profile settings

2. This is where you enter your name, a photo, email, and phone number.
Enter your information.
Click "Save" ③.



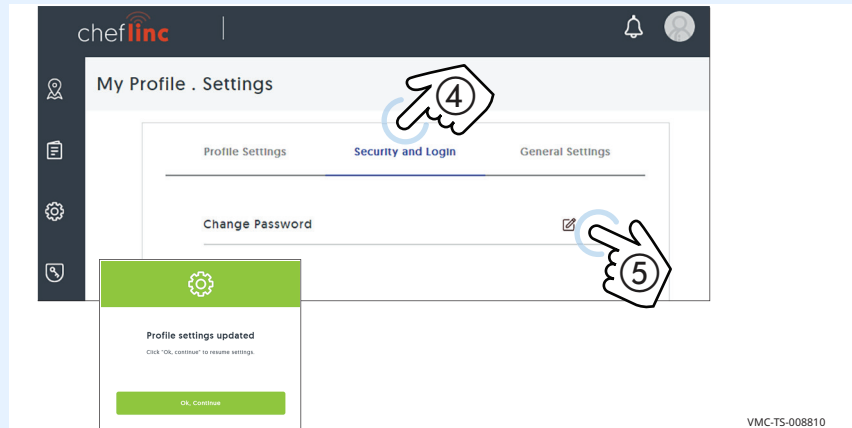
VMC-TS-008808

Continued on next page

Continued from previous page

Security and login settings

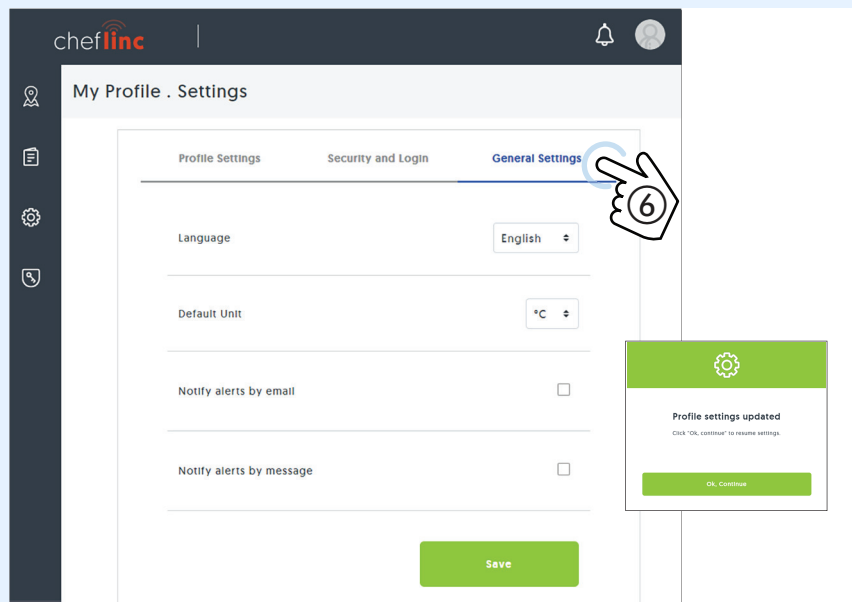
- This is where you set or change your password. **Click** "Security and Login" ④. **Click** the pencil icon ⑤. **Enter** the appropriate information. **Click** "Save". **Click** "OK, continue".



VMC-TS-008810

General settings

- This is where you set your preferred unit of measure, language, and notification method. **Click** "General Settings" ⑥. **Enter** the appropriate information. **Click** "Save". **Click** "OK, continue".



VMC-TS-008812

Result

The settings have now been changed.

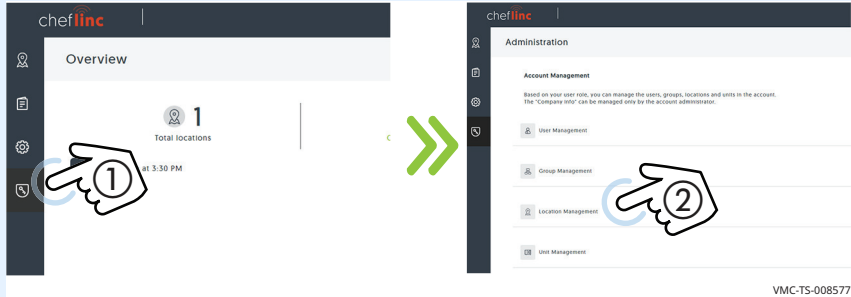
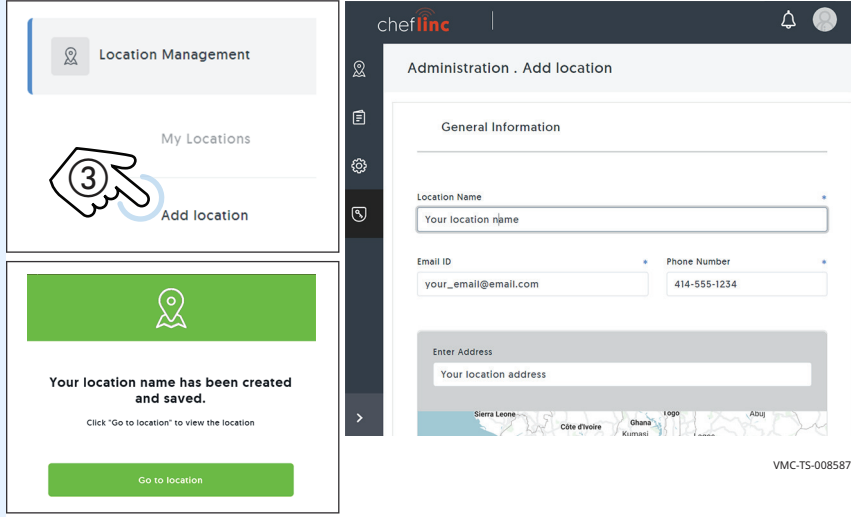
How to Add a Location

Before you begin

- Make sure you have a ChefLinc™ account set up.
- Make sure you know the location address and point-of-contact email address and phone number for the location.

Procedure

To add a location, do the following.

Step	Action
1.	<p>Sign in to your ChefLinc account.</p> <p>Click the Administration icon ①. The administration screen displays.</p> <p>Click "Location Management" ②.</p>  <p style="text-align: right;">VMC-TS-008577</p>
2.	<p>Click "Add location" ③.</p> <p>Enter the requested information. Click "Save".</p>  <p style="text-align: right;">VMC-TS-008587</p>

Result

The location has now been added.

How to Add a Unit

Before you begin

- Make sure you have a location created.
- Make sure you have the serial number from the unit.

Procedure

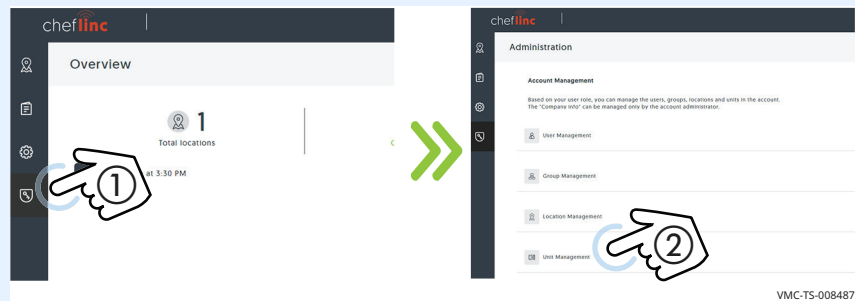
To add a unit, do the following.

Step	Action
1.	<p>Sign in to your ChefLinc™ account.</p> <p>Click the Administration icon ①. The administration screen displays.</p> <p>Click “Unit management” ②.</p> 
2.	<p>Click “Add unit” ③.</p> <p>Enter the requested information.</p> <p>Click “Assign location” ④. Choose a location from the list. Click “Assign”.</p> <p>Click “Save”.</p> 

1. **Sign in** to your ChefLinc™ account.

Click the Administration icon ①. The administration screen displays.

Click “Unit management” ②.



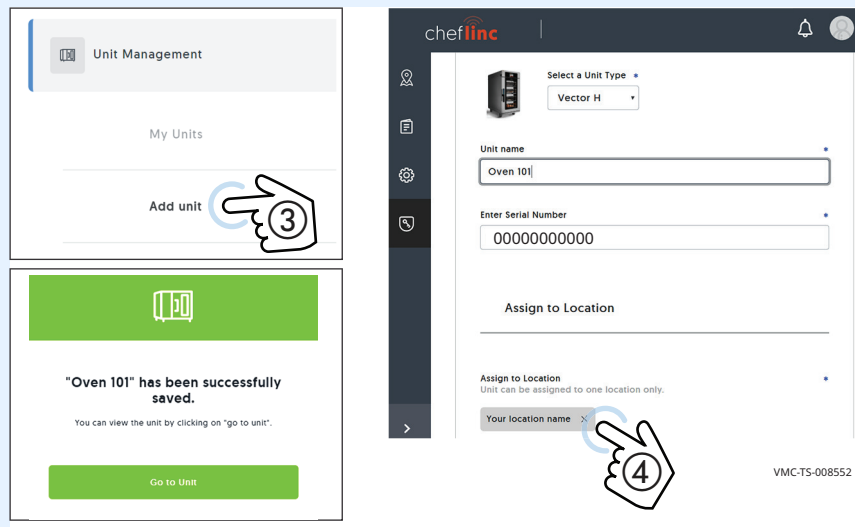
VMC-TS-008487

2. **Click** “Add unit” ③.

Enter the requested information.

Click “Assign location” ④. Choose a location from the list. **Click** “Assign”.

Click “Save”.



VMC-TS-008552

Result

The unit has now been added.

How to Add a User

Before you begin

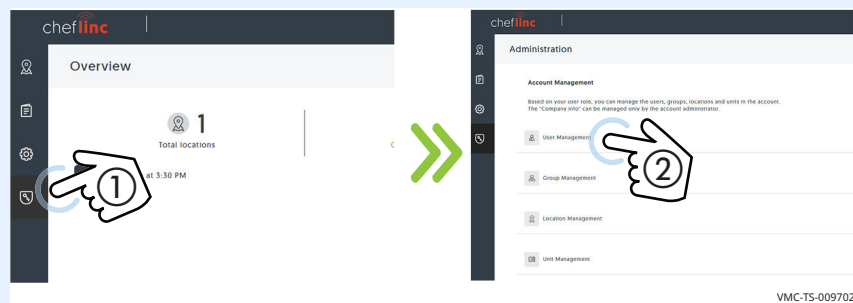
- Make sure you know the role that the new user will have.
- Make sure you have the new user's email address.

Procedure

To add a user, do the following.

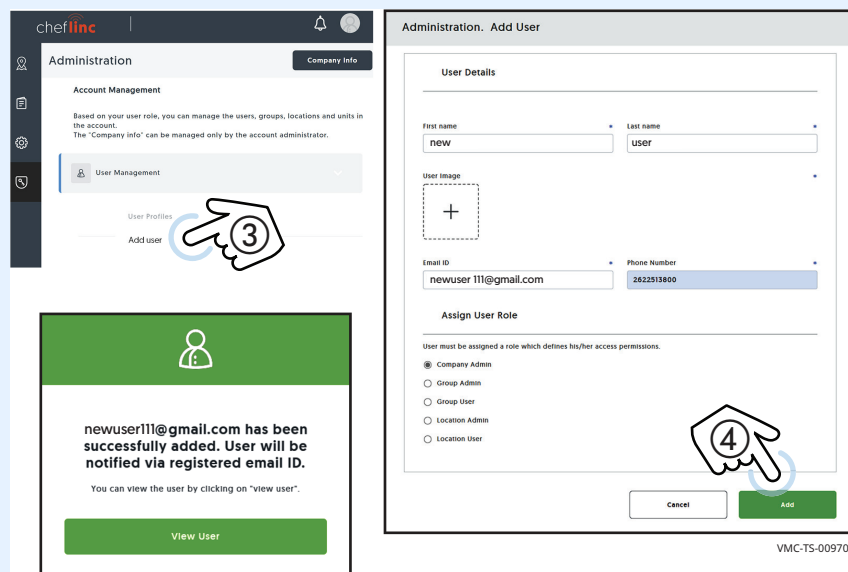
Step Action

1. **Sign in** to your ChefLinc™ account.
Click the Administration icon ①. The administration screen displays.
Click "Unit management" ②.



VMC-TS-009702

2. **Click** "Add user" ③.
Enter the requested information and assign a role for the user. See topic *User Permissions* for details.
Click "Add" ④. A confirm screen displays. The new user is sent an email.



VMC-TS-009704

Result

The new user has now been added.

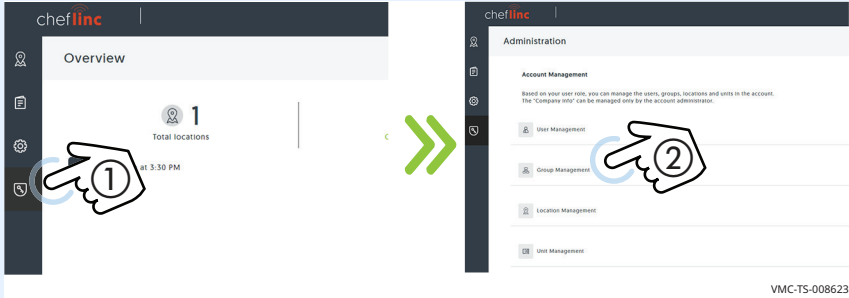
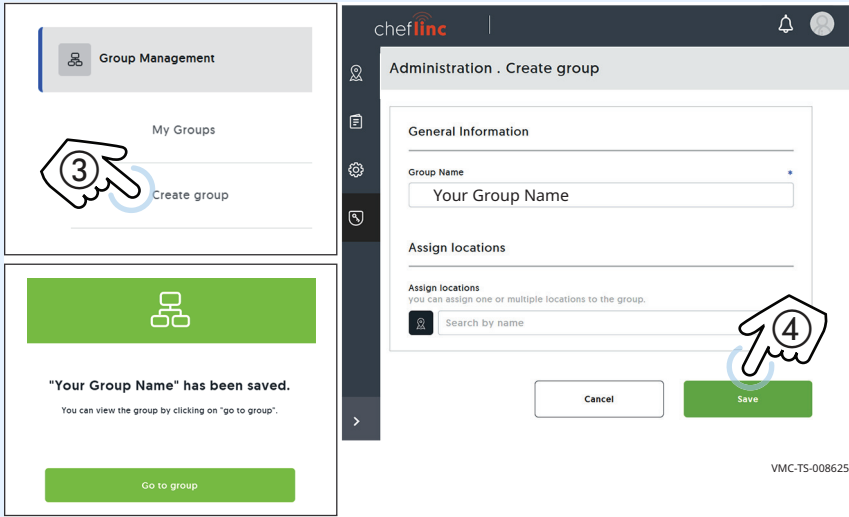
How to Create a Group

Before you begin

- Make sure you have a ChefLinc™ account set up.
- Make sure you have the names of the locations to add to the group.

Procedure

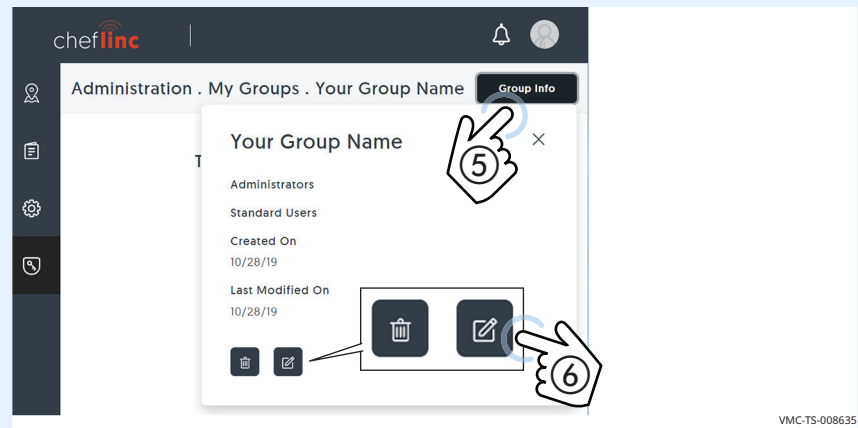
To set up a group, do the following.

Step	Action
1.	<p>Sign in to your ChefLinc account.</p> <p>Click the Administration icon ①. The administration screen displays.</p> <p>Click “Group Management” ②.</p>  <p style="text-align: right;">VMC-TS-008623</p>
2.	<p>Click “Create Group” ③.</p> <p>Enter the name of the group you want to create.</p> <p>Click “Save” ④. A confirmation screen displays.</p>  <p style="text-align: right;">VMC-TS-008625</p>

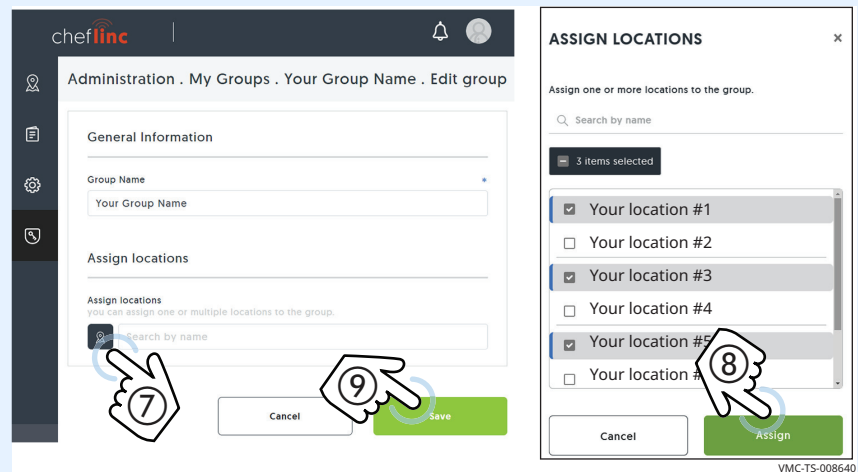
Continued on next page

Continued from previous page

3. **Click “Group Info”** ⑤. Information for the group is displayed.
Click the edit icon ⑥.



4. **Click the location icon** ⑦.
Click the locations you want to assign to the group. Click “Assign” ⑧.
Click “Save” ⑨. The locations are saved to the group.



Result

The group has now been created.

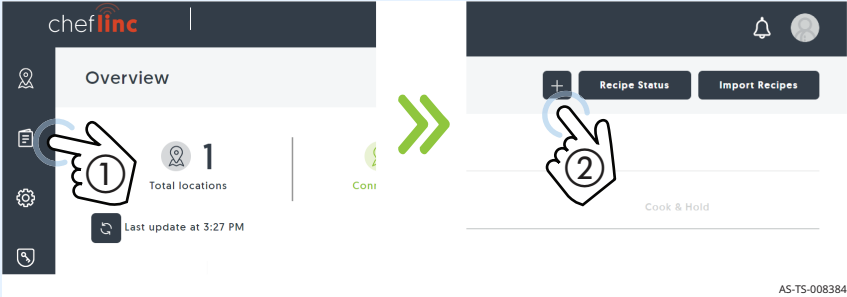
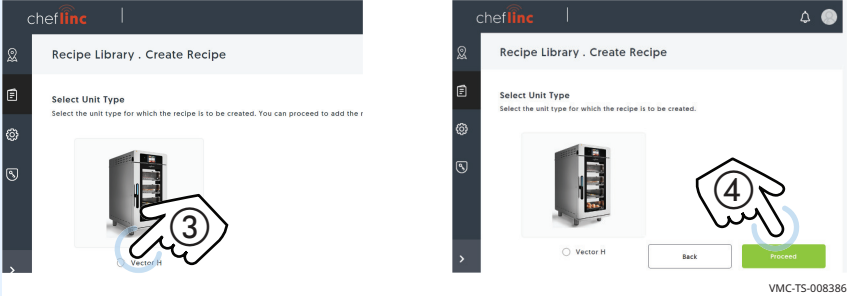
How to Create a Recipe

Before you begin

- Make sure you have a ChefLinc™ account set up.
- Make sure you have the recipe parameters: ingredients, temperature of cook, time of cook, etc.

Procedure

To create a recipe, do the following.

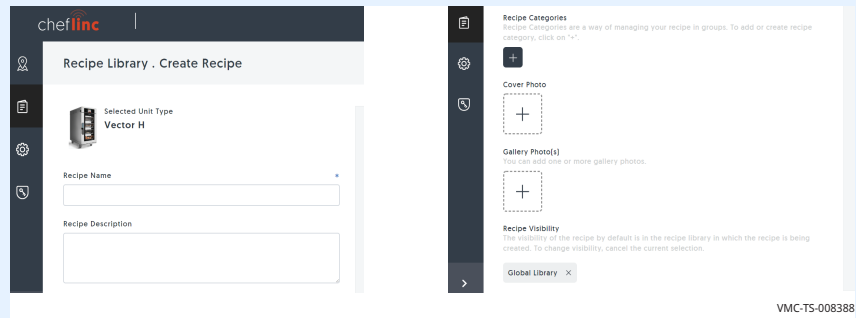
Step	Action
1.	<p>Sign in to your ChefLinc account.</p> <p>Click the Recipe Library icon ①.</p> <p>Click “+” ②.</p>  <p style="text-align: right; font-size: small;">AS-TS-008384</p>
2.	<p>Click the unit type ③.</p> <p>Click “Proceed” ④.</p>  <p style="text-align: right; font-size: small;">VMC-TS-008386</p>

Continued on next page

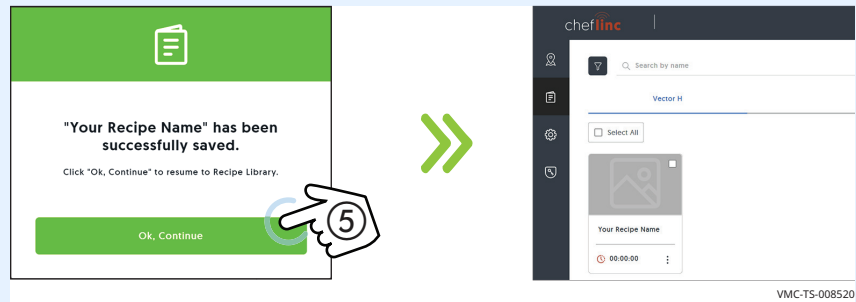
Continued from previous page

Naming the recipe

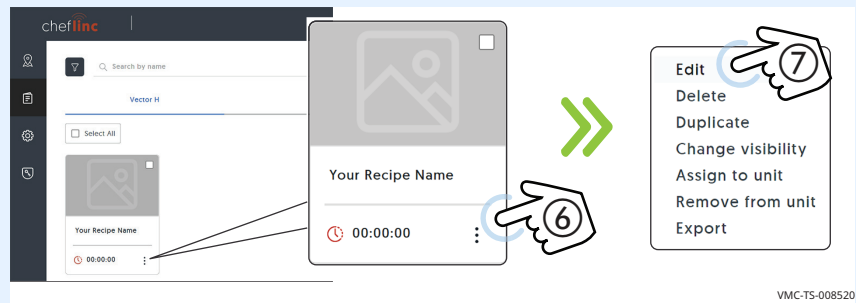
3. **Enter** the information requested. Adding a photo and adding a category will be explained in upcoming steps. **Click “Save”**.



4. The confirmation screen appears. **Click “Ok, Continue”** ⑤. Your newly created recipe displays.



5. **Click** the more options icon (three dots) ⑥. Then **click “Edit”** ⑦.



Continued on next page

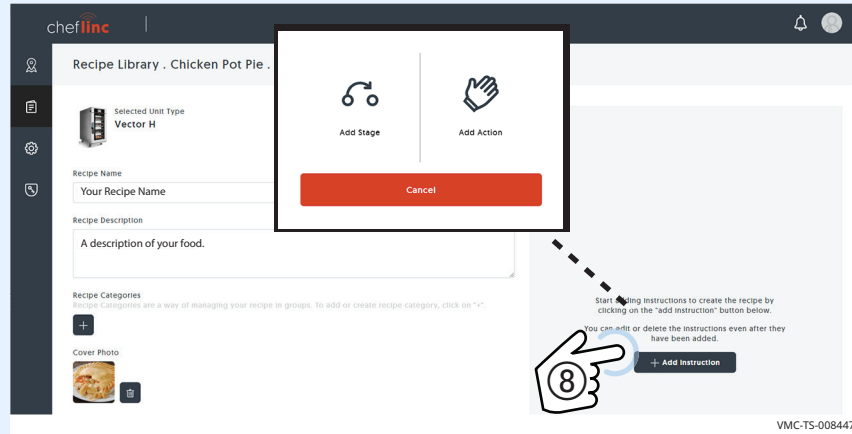
Continued from previous page

Building the recipe

- To start adding stages and actions to the recipe, **click** the “Add instruction” button **⑧**. The Add Stage/Add Action screen displays.

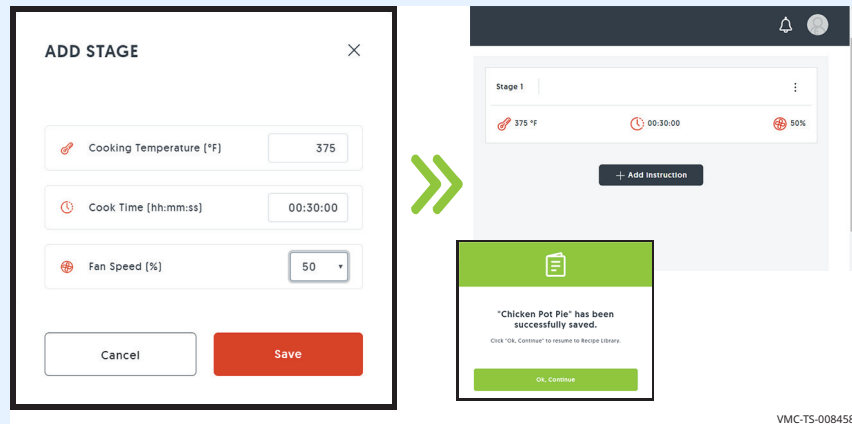
“Add Stage” is used to enter temperature, time, and fan speed.

“Add Action” is used to add an action, for example, adding an ingredient such as cheese to the food being cooked.



- Click** “Add Stage”, then enter temperature, time, and fan speed. **Click** “Save”.

The stage will appear on the screen. Up to 10 stages may be added.



Continued on next page

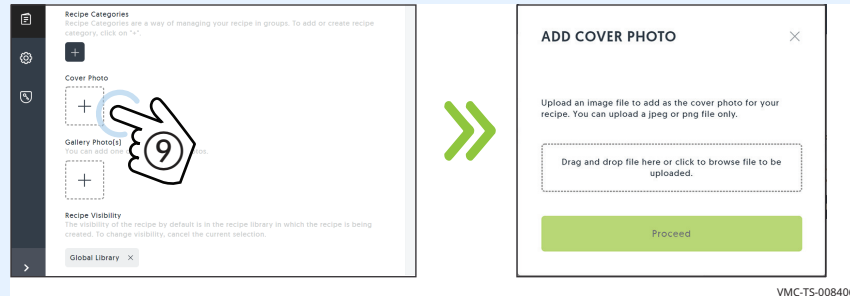
Continued from previous page

Adding a photo

8. Two categories of photos may be added to a recipe: Cover, and Gallery. A cover photo is the photo you want to represent the recipe. Gallery photos are photos that are included within the recipe. To add a photo, **copy** the chosen photo to your desktop. Photos can be either png or jpg. Limit the size of the photo to less than 1 megabyte (1 MB).

Click the cover photo icon ⑨.

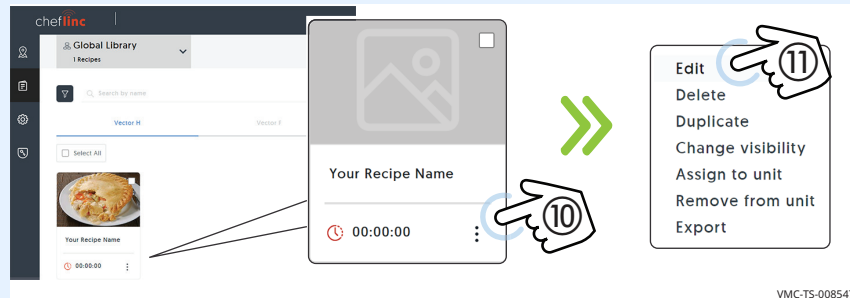
Drag and drop the photo to the screen. **Click** "Proceed". The photo is added. **Click** "Save".



VMC-TS-008406

Adding a category

9. **Click** the more options icon (three dots) ⑩. Then **click** "Edit" ⑪.

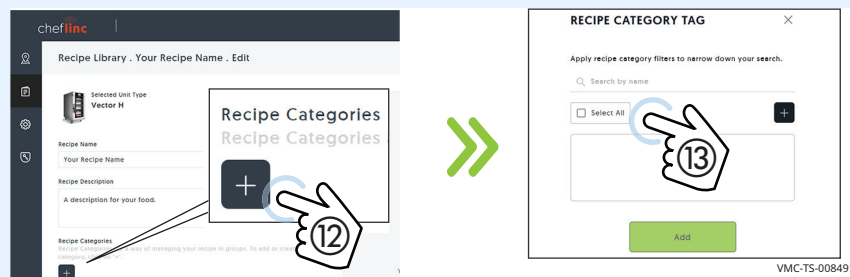


VMC-TS-008547

10. **Click** "+" under Recipe Categories ⑫.

Choose from an existing category and click "Add", or click the "+" sign to add a new category. **Enter** the name of the category and **Click** "Create". Then **Click** "Add" in the "Recipe Category Tag" screen.

Click the check box ⑬. **Click** the "Add".



VMC-TS-008491

Result

The recipe has now been created.

How to Assign a Recipe to a Unit

Before you begin

- Make sure you have the recipe created.
- Make sure that the unit is assigned to a location.

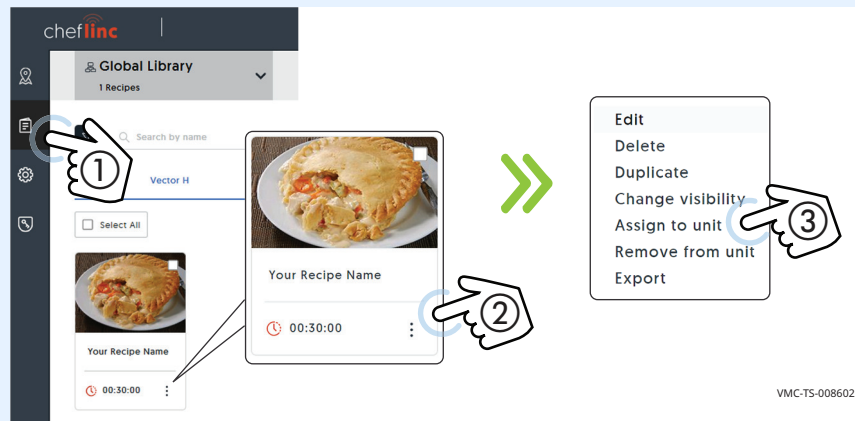
Procedure

To assign a recipe to a unit, do the following.

Step

Action

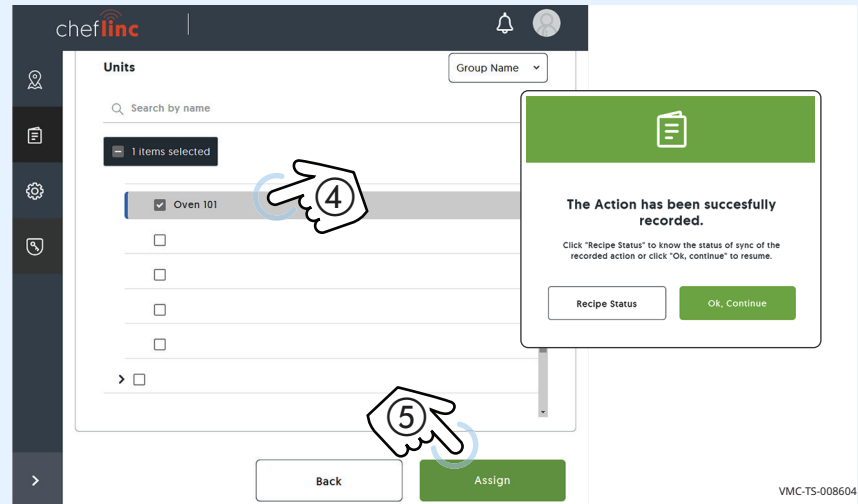
1. **Sign in** to your ChefLinc™ account.
Click the Recipe Library icon ①.
Click the desired recipe. **Click** the more options icon (three dots) ②.
Click “Assign to unit” ③.



Continued on next page

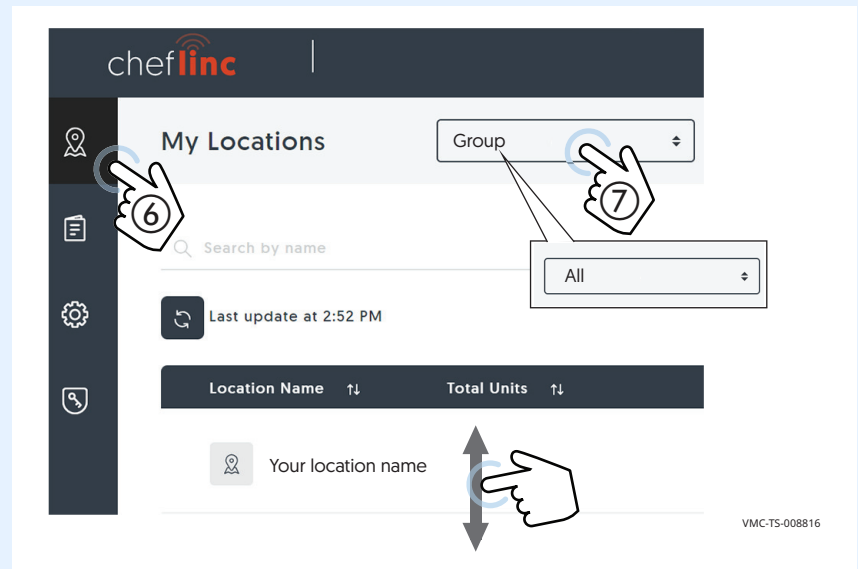
Continued from previous page

2. **Click** the unit ④ you want to assign the recipe to.
Click "Assign" ⑤. **Click** "Ok, continue".



NOTE: If the unit is not turned on, the recipe will wait in a queue until the unit is turned on. At that time, the recipe will sync with the unit.

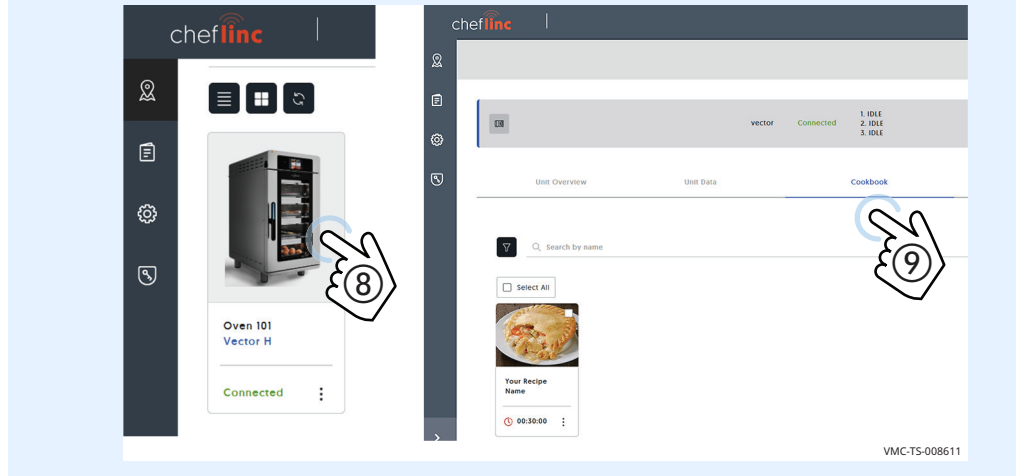
3. To view the recipe on the unit, **click** the My Locations icon ⑥. If you don't see your location, **click** the box that says "Group" ⑦ then **click** "All". Then scroll to find the particular oven.



Continued on next page

Continued from previous page

4. **Click** the chosen oven (8).
Click "Cookbook" (9). The recipe will display.



Result

The recipe has now been assigned to a unit.

How to Assign Multiple Recipes to Multiple Units

Before you begin

- Make sure you have the recipes created.
- Make sure the units are turned on if you want to assign the recipes to the units immediately; otherwise, the recipes will wait in a queue until the units are turned on.

Procedure

To assign multiple recipes to multiple units, do the following.

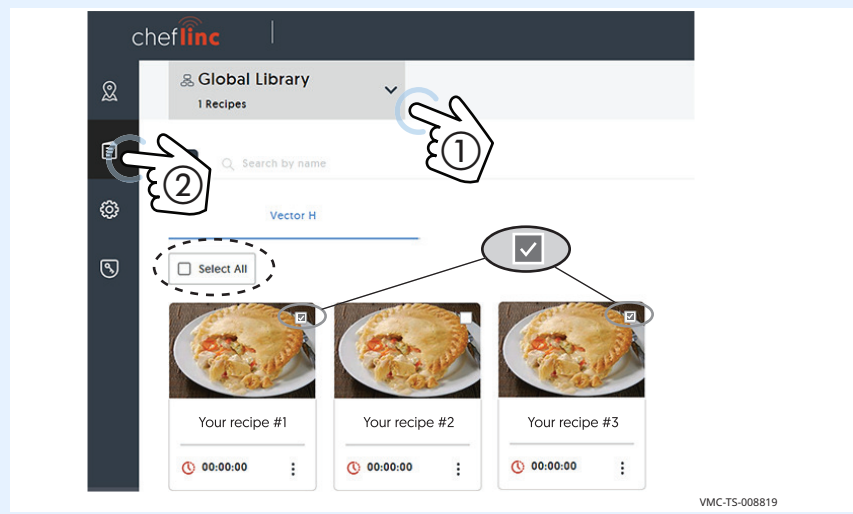
Step	Action
1.	<p>Sign in to your ChefLinc™ account.</p> <p>If you have more than one library of recipes, choose the library from the drop down menu ① that contains the recipes to be assigned.</p> <p>Click the Recipe Library icon ②.</p> <p>Click “Select All” if you want to assign all recipes, or click the individual recipes you want to assign.</p> 

1. **Sign in** to your ChefLinc™ account.

If you have more than one library of recipes, **choose** the library from the drop down menu ① that contains the recipes to be assigned.

Click the Recipe Library icon ②.

Click “Select All” if you want to assign all recipes, or **click** the individual recipes you want to assign.



VMC-TS-008819

Continued on next page

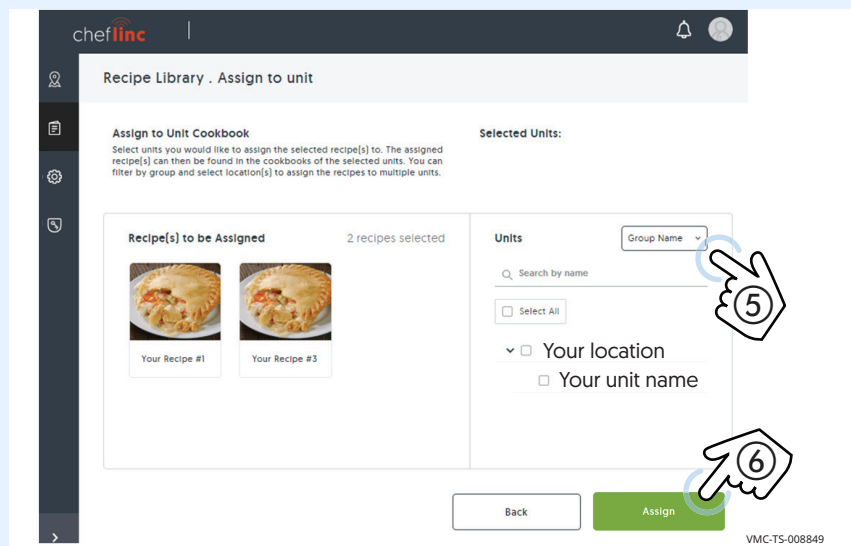
Continued from previous page

2. **Click** the action (hand) icon ③.
Click "Assign to Unit Cookbook" ④.



VMC-TS-008671

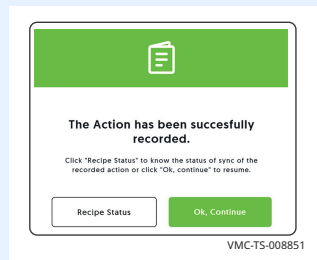
3. If you have created a group, you can choose from the "Group Name" drop down menu ⑤. You can also search by name or scroll to find the unit(s) you want to assign the recipes to. **Click** the units of your choice.



VMC-TS-008849

- Click "Assign" ⑥.

The success screen displays. Click "OK, continue" to continue working in ChefLinc™, or click "Recipe Status" to view the status of the recipe(s).

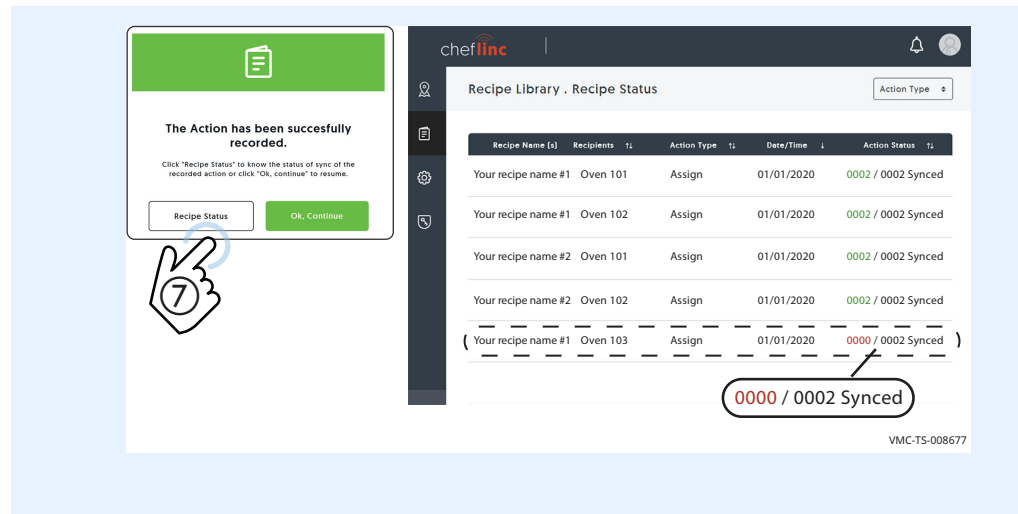


VMC-TS-008851

Continued on next page

Continued from previous page

When you click the "Recipe Status" button ⑦, the recipe status screen displays. Status data in green means that the recipes have synced to the unit and are available for use. Status data in red means that the recipe is in the queue for the unit and will sync to the unit as soon as the unit is turned on.



Result

Multiple recipes have now been assigned to multiple units.

How to Create and Assign Unit Settings

Background

Use unit settings to create a template of settings that you can then apply to multiple units without having to program each unit individually.

Before you begin

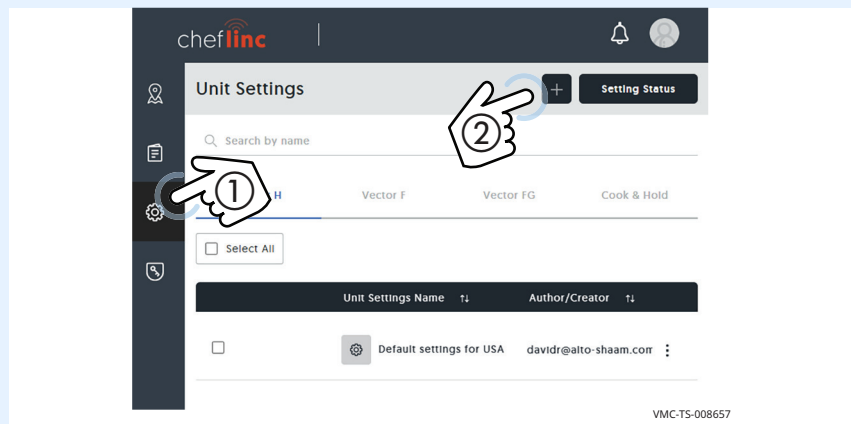
- Make sure you have a ChefLinc™ account set up.
- Make sure that you have a plan for the unit settings and for which ovens you would like the settings assigned to.

Procedure

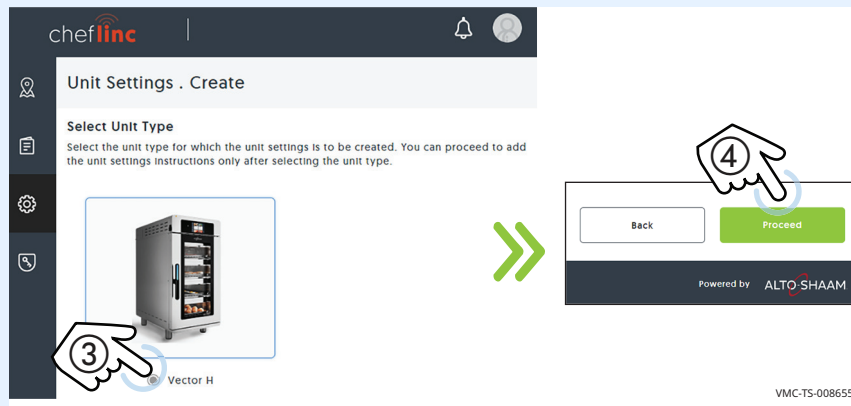
To create unit settings, do the following.

Step	Action
------	--------

1. **Sign in** to your ChefLinc account.
Click the Unit Settings icon ①. The unit settings screen displays.
Click “+” ②.



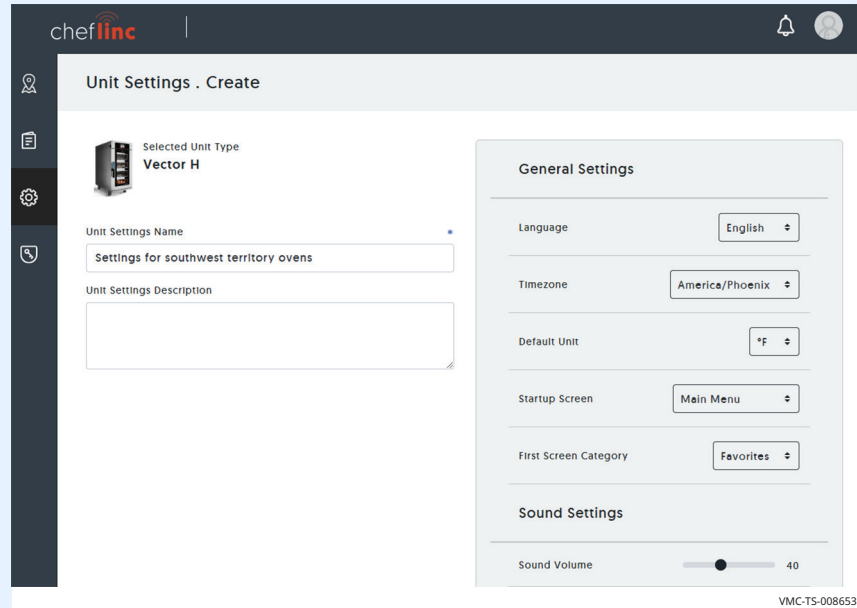
2. **Click** the unit type ③. **Click** “Proceed” ④.



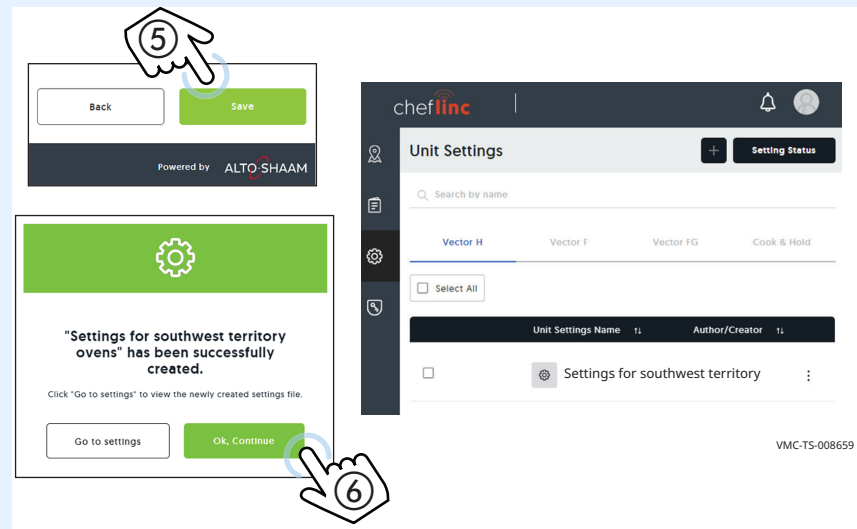
Continued on next page

Continued from previous page

3. **Enter** a name for the unit settings under “Unit Settings Name”.
Enter a description for the settings under “Unit Settings Description”.
Enter the information requested under “General Settings”.



4. **Click** “Save” ⑤.
Click “OK, continue” ⑥. The unit settings are displayed.



Continued on next page

Assigning the unit settings

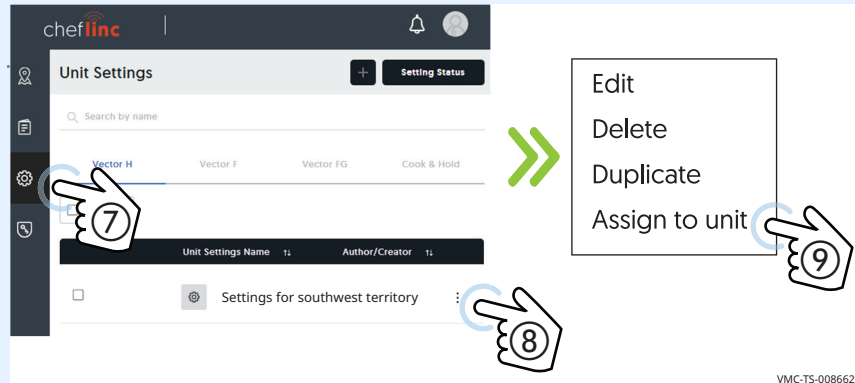
Continued from previous page

- After the unit settings are created, you can assign them to one unit or many units. To assign the settings, do the following.

Click the Unit Settings icon (7).

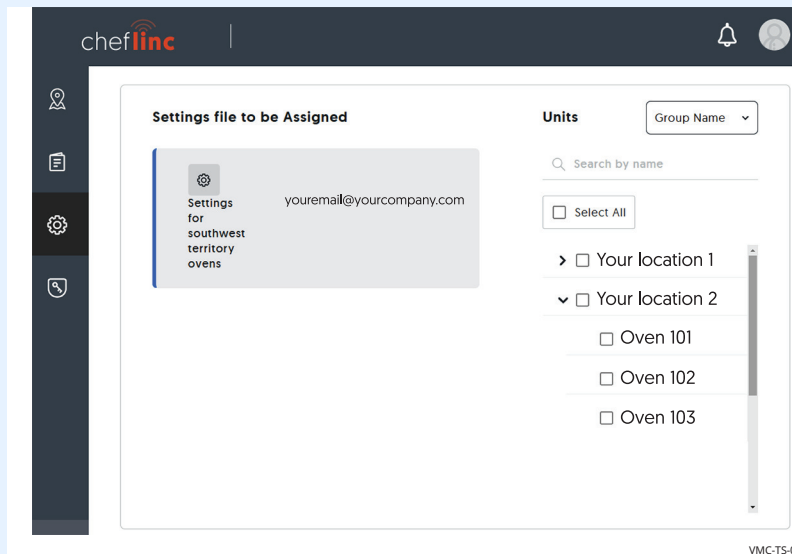
Click the more options icon (three dots) (8).

Click "Assign to Unit" (9).



VMC-TS-008662

- Select** the group(s), the location(s), or the individual oven(s) that you want to apply the settings to.



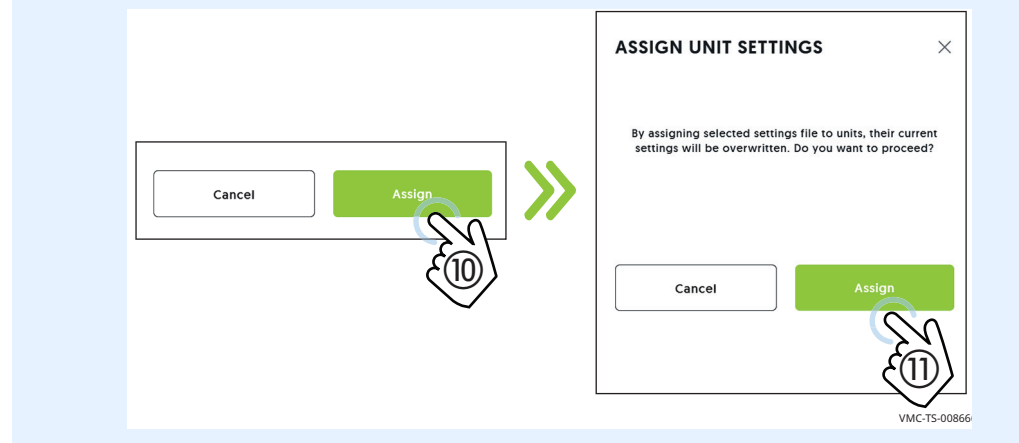
VMC-TS-008664

Continued on next page

Continued from previous page

7. **Click "Assign" ⑩.**

Click "Assign" ⑪.



Result

The unit settings have now been created and assigned.

How to View HACCP Data

Before you begin

- Make sure you know the location of the unit whose HACCP data you want to view.
- Make sure the unit is turned on.

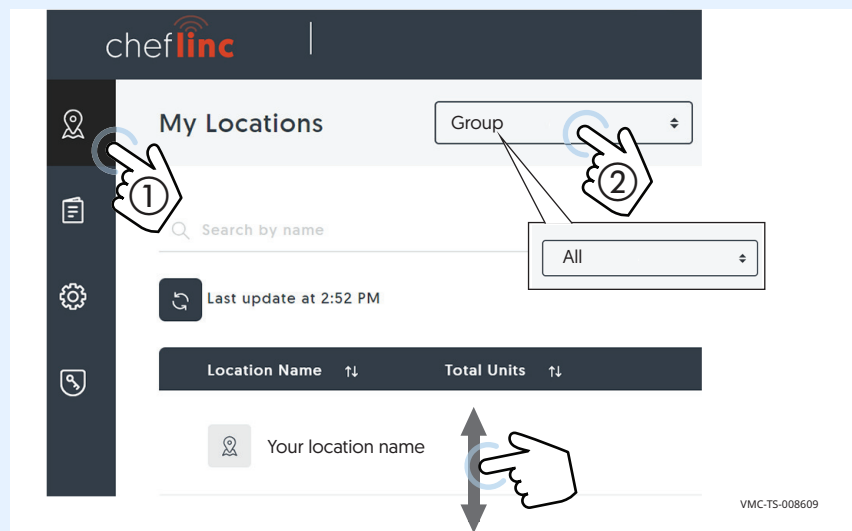
Procedure

To view the HACCP data, do the following.

Step	Action
------	--------

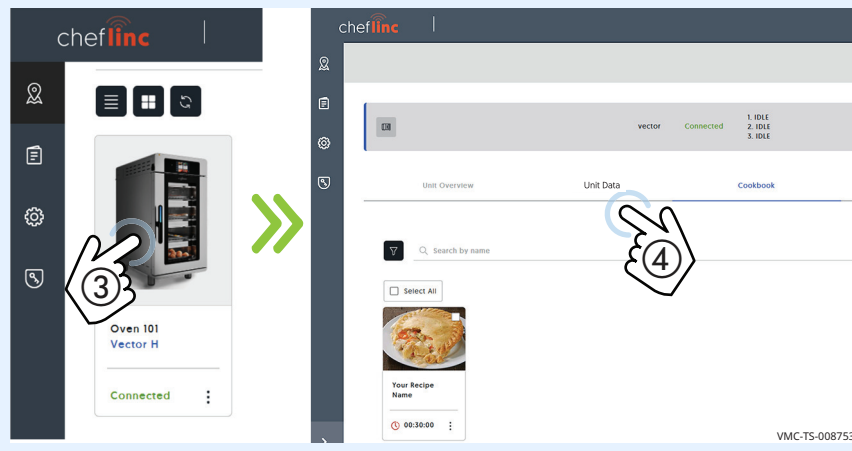
1. **Sign in** to your ChefLinc™ account.

Click the My Locations icon ①. If you don't see your location, **click** the box that says "Group" ② then **click** "All". Then **scroll** to find the chosen oven.



2. **Click** the chosen oven ③.

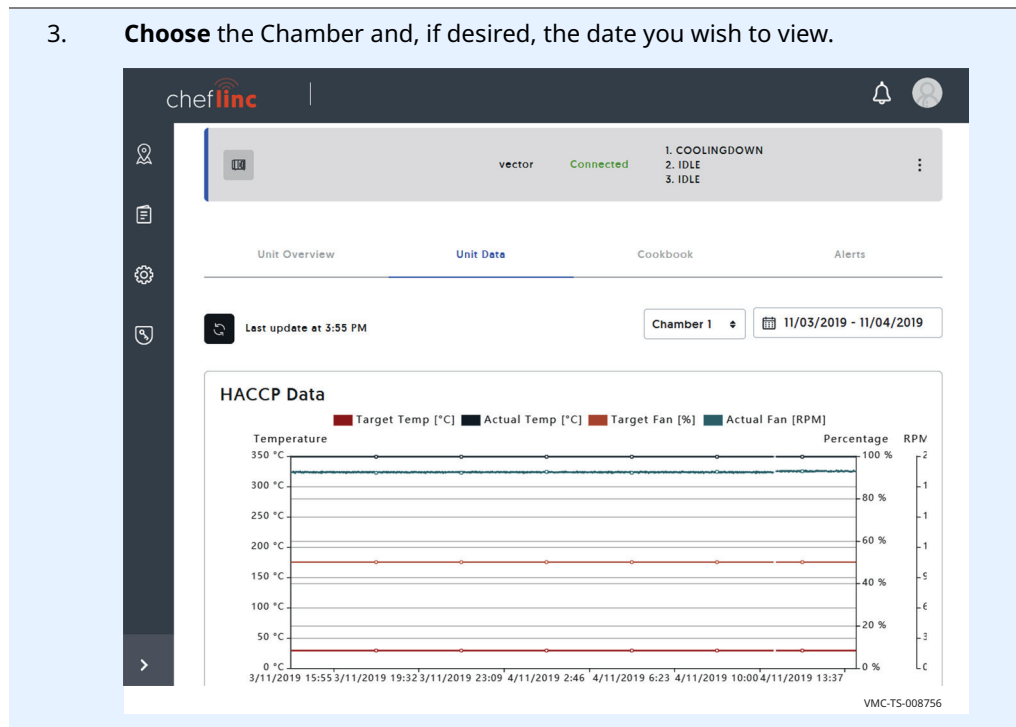
Click "Unit Data" ④.



Continued on next page

Continued from previous page

3. Choose the Chamber and, if desired, the date you wish to view.



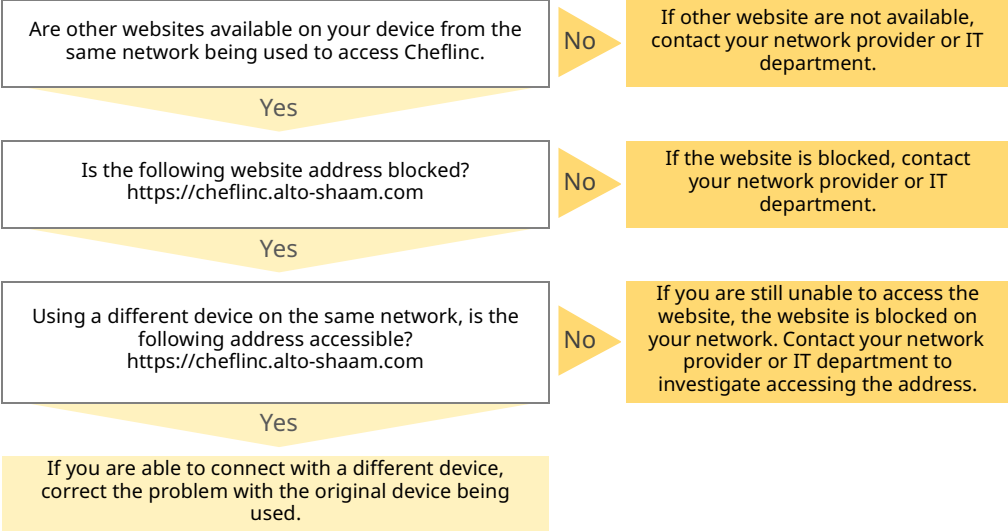
Result

The HACCP data has now been viewed.

User Permissions

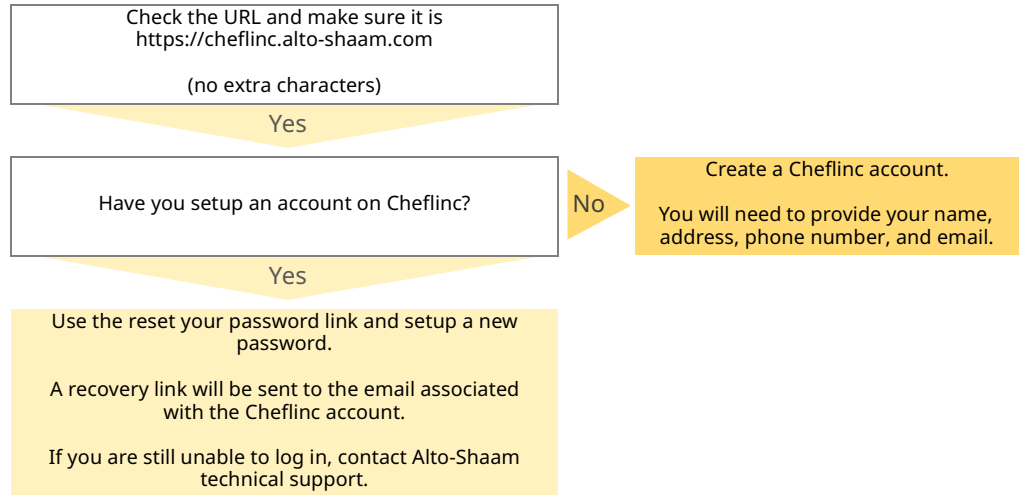
Permissions	Roles				
	Company Admin	Group Admin	Location Admin	Group User	Location User
Create Recipe	No	No	No	No	No
View Recipes	Yes	Yes	Yes	Yes	Yes
Edit Recipe	Yes	Yes	Yes	No	No
Delete Recipe	Yes	Yes	Yes	No	No
Create Recipe	Yes	Yes	Yes	No	No
View Recipes	Yes	Yes	Yes	Yes	Yes
Edit Recipe	Yes	Yes	Yes	No	No
Delete Recipe	Yes	Yes	Yes	No	No
Import recipe	Yes	Yes	Yes	No	No
Export recipe	Yes	Yes	Yes	No	No
Assign to units	Yes	Yes	Yes	No	No
Remove from units	Yes	Yes	Yes	No	No
Read location list	Yes	Yes	Yes	Yes	Yes
Read location details	Yes	Yes	Yes	Yes	Yes
Read units available in location	Yes	Yes	Yes	Yes	Yes
Share access with service technician	Yes	Yes	Yes	Yes	Yes
Read location alerts and manage them	Yes	Yes	Yes	Yes	Yes
Read location data	Yes	Yes	Yes	Yes	Yes
View Unit data	Yes	Yes	Yes	Yes	Yes
View unit configuration	Yes	Yes	Yes	Yes	Yes
Edit unit configuration	Yes	Yes	Yes	No	No
View alerts	Yes	Yes	Yes	Yes	Yes
unit service monitor	Yes	Yes	Yes	Yes	Yes
unit remote control	Yes	Yes	Yes	No	No
Create configuration profile	Yes	No	No	No	No
View configuration profiles	Yes	No	No	No	No
Edit configuration profile	Yes	No	No	No	No
Delete Recipe configuration profile	Yes	No	No	No	No
Assign configuration profile to devices/groups	Yes	Yes	Yes	No	No
Import configuration profile	Yes	No	No	No	No
Export configuration profile	Yes	Yes	Yes	No	No
View videos	Yes	Yes	Yes	Yes	Yes
View Company data	Yes	Yes	Yes	Yes	Yes
Edit Company data	Yes	No	No	No	No
User management - Create new user	Yes	Yes	Yes	No	No
User management - View users	Yes	Yes	Yes	No	No
User management - Edit users	Yes	Yes	Yes	No	No
User management - Delete users	Yes	Yes	Yes	No	No
Location management - add, edit, delete	Yes	No	No	No	No
Location management - Create new location	Yes	Yes	No	No	No
Location management- View locations	Yes	Yes	Yes	No	No
Location management - Edit location	Yes	Yes	Yes	No	No
Location management - Delete locations	Yes	Yes	No	No	No
Group management - Create new group	Yes	No	No	No	No
Group management - View groups	Yes	No	No	No	No
Group management - Edit group	Yes	No	No	No	No
Group management - Delete group	Yes	No	No	No	No
Unit management - Add new unit	Yes	No	No	No	No
Unit management - View units	Yes	Yes	Yes	No	No
Unit management - Edit units	Yes	Yes	Yes	No	No
Unit management - Delete units	Yes	Yes	No	No	No
Get companies list	No	No	No	No	No
Impersonate another company	No	No	No	No	No

Cheflinc.alto-shaam.com is not Available on your Device



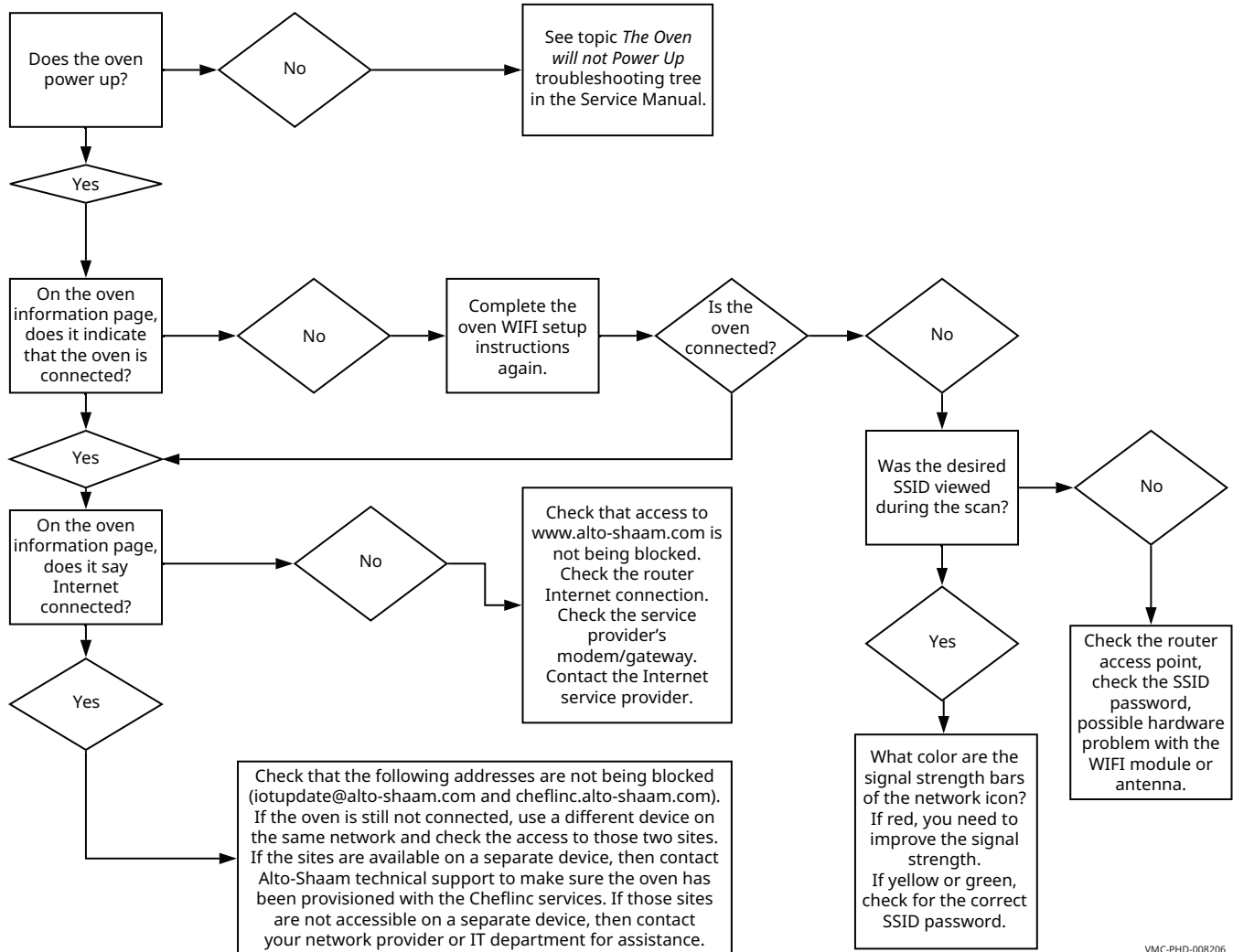
TROUBLESHOOTING

Cannot Connect to cheflinc.alto-shaam.com



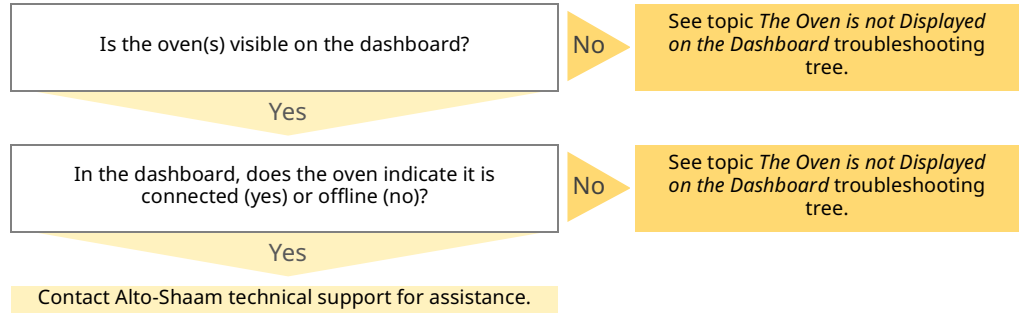
The Oven is not Displayed on the Dashboard

Prerequisite: The operator is on a device connected to the Internet and is able to login to cheflinc.alto-shaam.com.



VMC-PHD-008206

Unable to Assign Recipes from the Dashboard to Ovens in the Field





ALTO-SHAAM ASIA
Shanghai, China
Phone +86-21-6173 0336

ALTO-SHAAM CANADA
Concord, Ontario Canada
Toll Free Phone 866-577-4484
Phone +1-905-660-6781

**ALTO-SHAAM CENTRAL
& SOUTH AMERICA**
Miami, FL USA
Phone +1-954-655-5727

**ALTO-SHAAM MIDDLE EAST
& AFRICA**
Dubai, UAE
Phone +971 4 321 9712

ALTO-SHAAM MEXICO
Phone +52 1 477-717-3108

ALTO-SHAAM FRANCE, L.L.C.
Aix en Provence, France
Phone +33(0)4-88-78-21-73

ALTO-SHAAM GMBH
Bochum, Germany
Phone +49(0)234-298798-0

ALTO-SHAAM RUSSIA
Moscow, Russia
Phone +7-903-793-2331



Menomonee Falls, WI 53052-0450, U.S.A.

Telephone 800-558-8744 | +1-262-251-3800 | alto-shaam.com